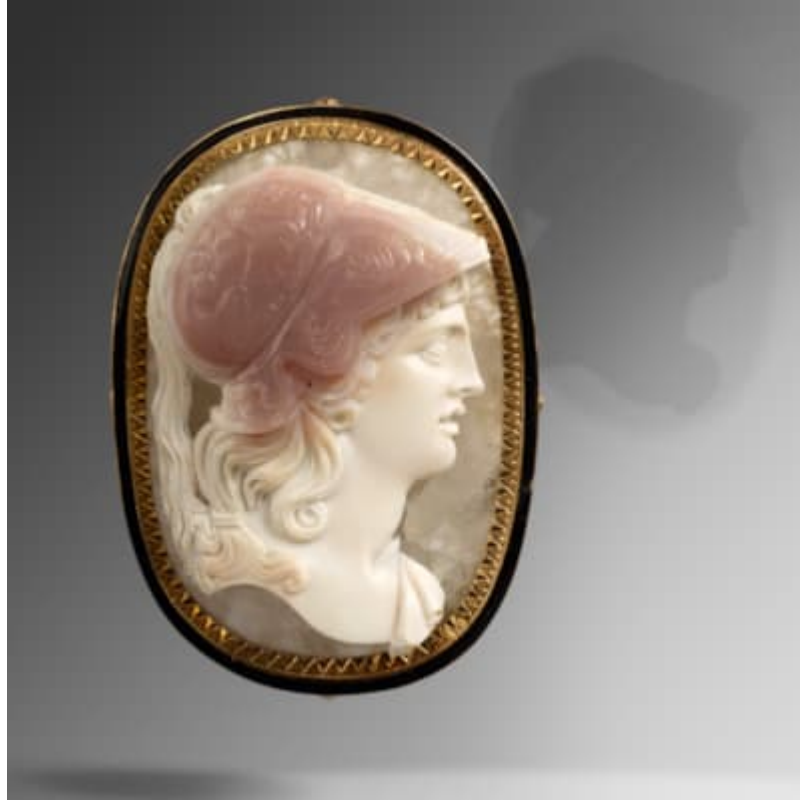


# Chamarande



## ITALIAN CAMEO BROOCH LATE 18TH/EARLY 19TH CENTURY

Gold brooch adorned with a tri-coloured agate cameo representing an Athena profile in a gold frame surrounded by black enamel.

Probably Italian work at the end of the 18th and beginning of the 19th century.

French mount.

Chamarande

Rue de l'Abbaye 67, B-1050 Brussels, Belgium

T +32 (0)2 649 22 10 | [chamarande@brutele.be](mailto:chamarande@brutele.be)